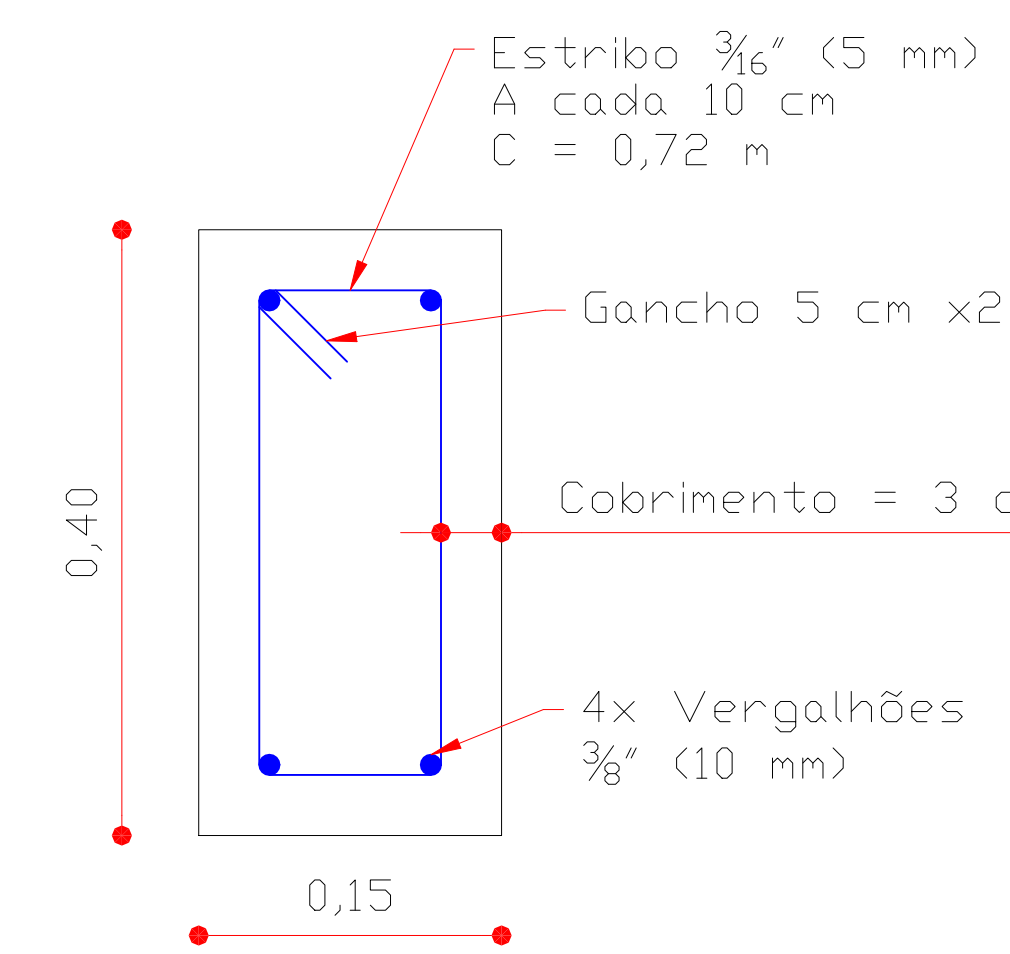
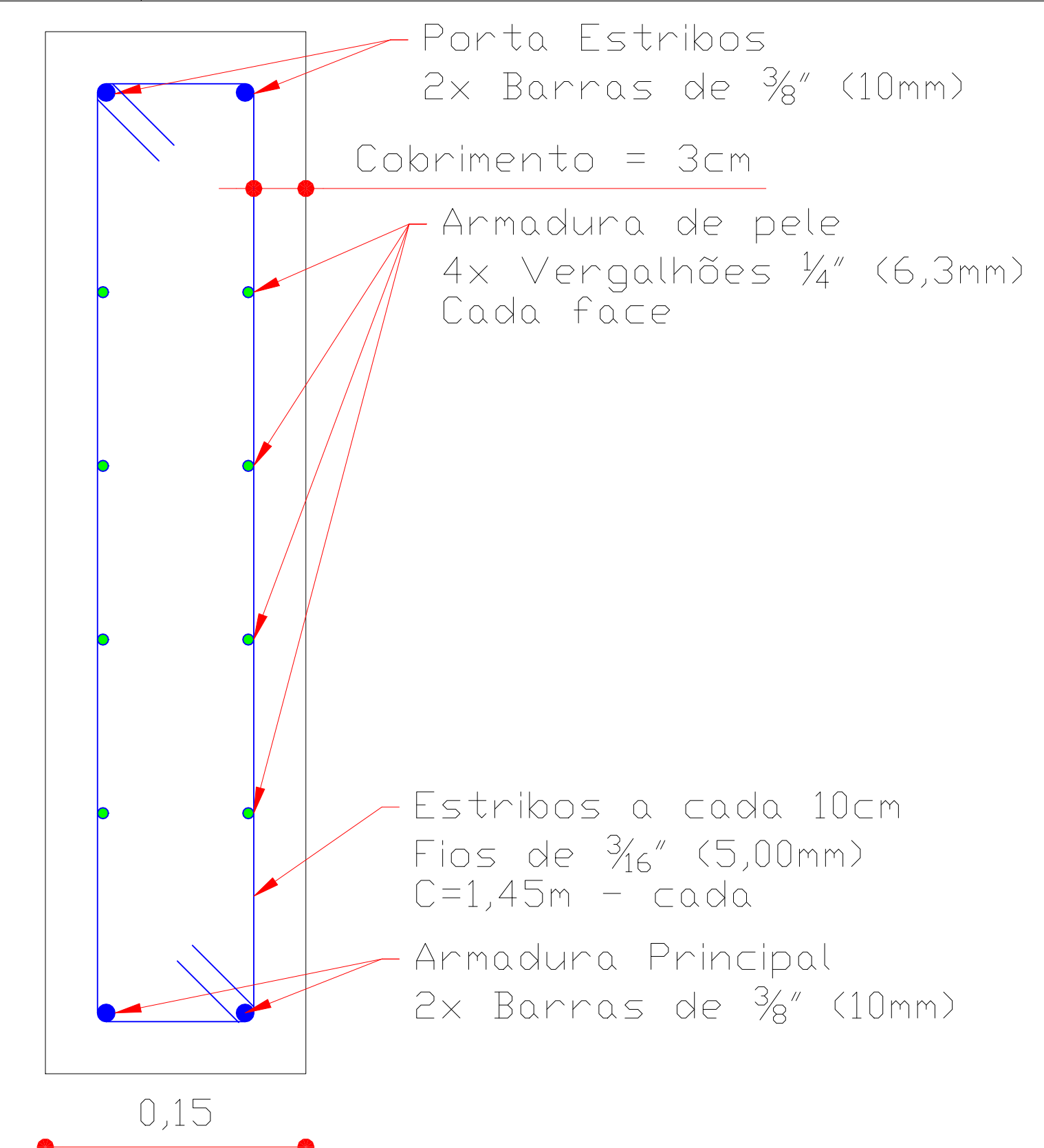


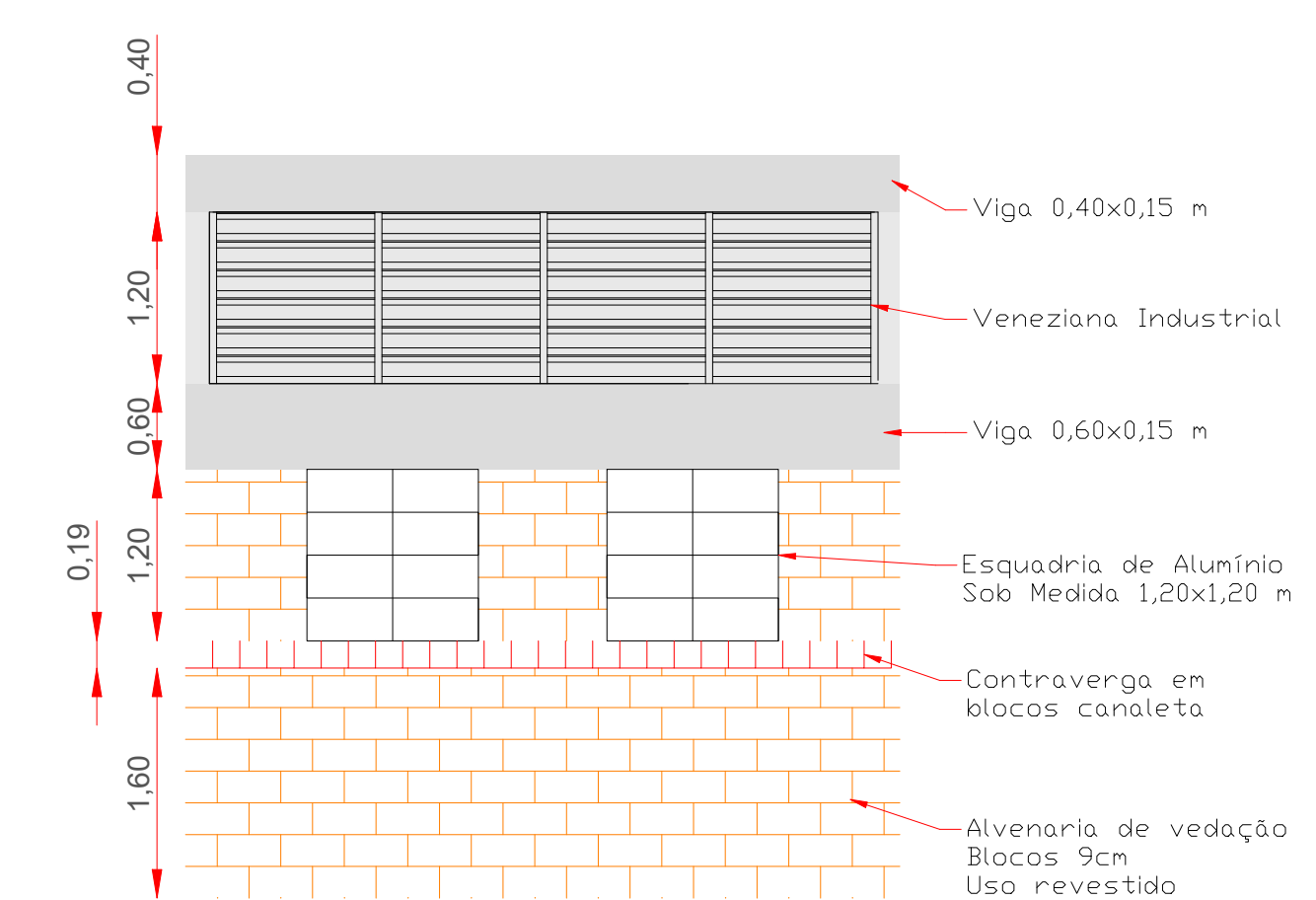


ESTRUTURAL
ESCALA 1:100

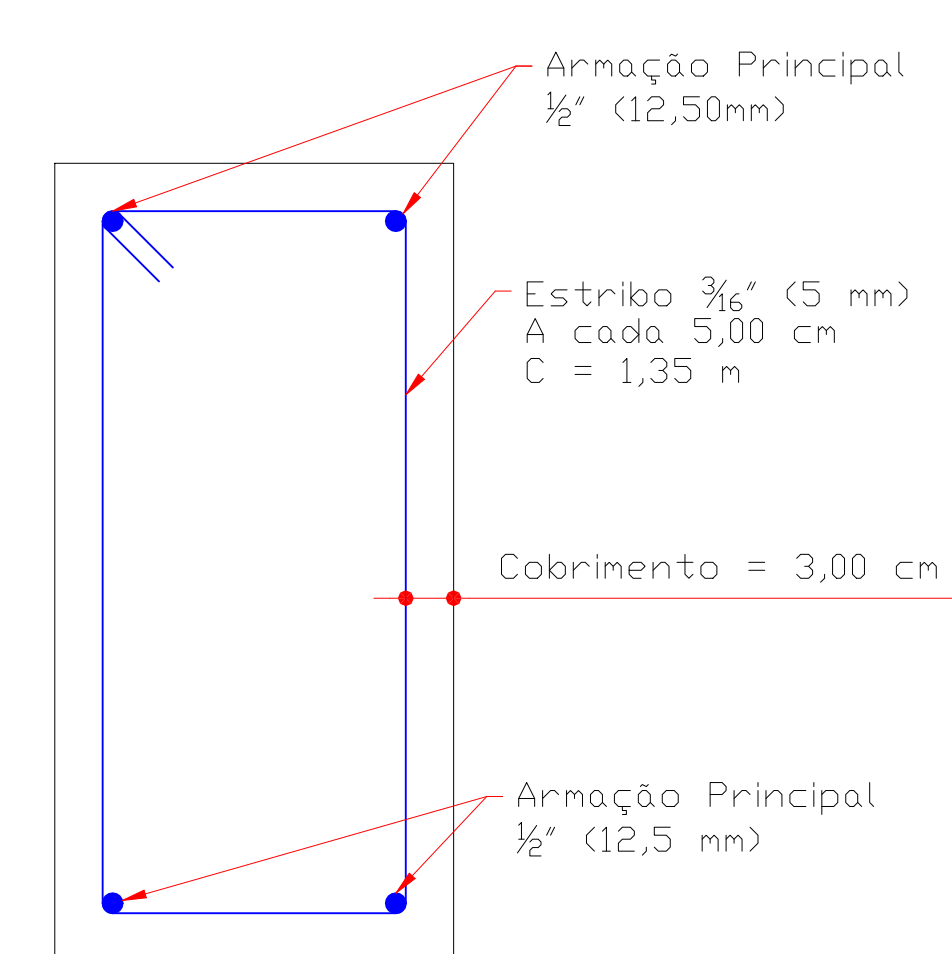
VIGA 0,60 X 0,15 M
SEM ESCALA



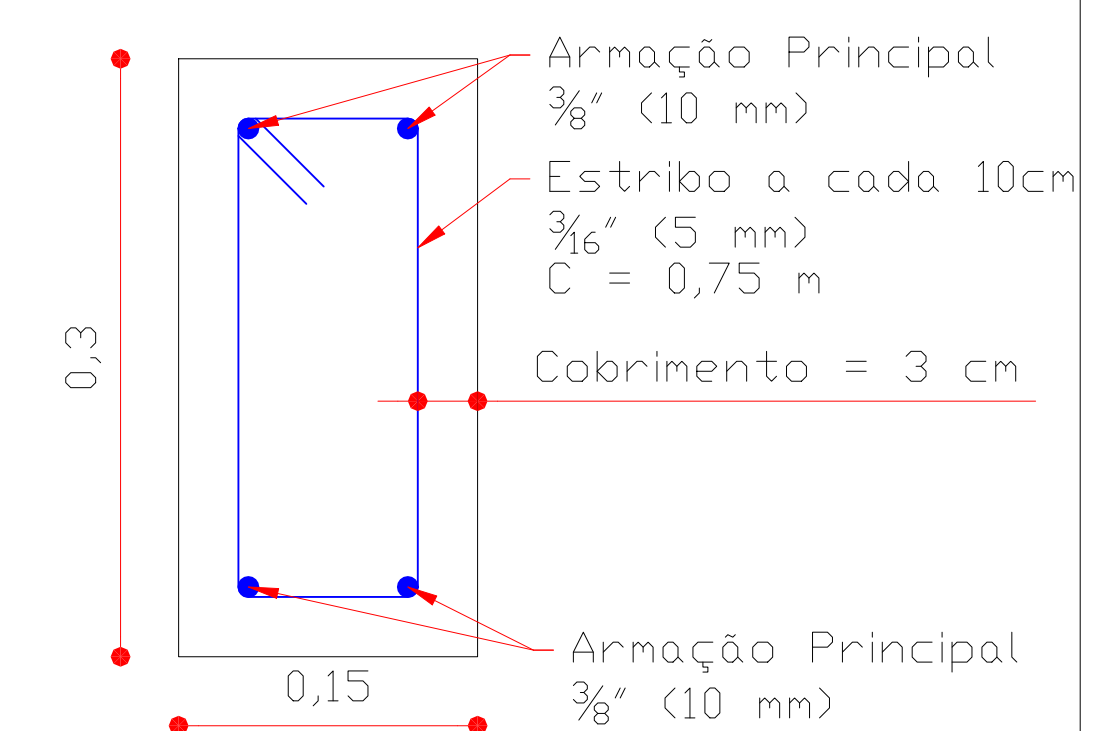
VIGA DE RESPALDO
SEM ESCALA



DETALHE TIPO DAS PAREDES LATERAIS
SEM ESCALA



PILARES 0,25 X 0,50 M
SEM ESCALA



PREFEITURA DO MUNICÍPIO DE JAHU
Fundada em 15 de agosto de 1853
Rua Principal, 444 - Centro - Jahu - SP
Telefone: (14) 3602-1716
www.jahu.sp.gov.br

SHPU

Obra: Reforma do Clube Real
Projeto: Estrutural
Endereço: Rua Santa Catarina, 120, Esquina c/ Rua São José, Dist. Potunduva, Jahu/SP

Engenheiro Civil CREASP 507042607	Escala: Indicada	Data: Fev/2023	Folha: 04/07
-----------------------------------	------------------	----------------	--------------

"JAHU CAPITAL DO CALCADO FEMININO" "BARRIO DE BARRIS - HERÓI NACIONAL"